



**PROFESSOR  
EGGHEAD  
SCIENCE ACADEMY**

SCIENCE HAS  
NEVER BEEN  
*this Cool!*



# EGGHEAD DETECTIVES

**SIGN  
UPS**

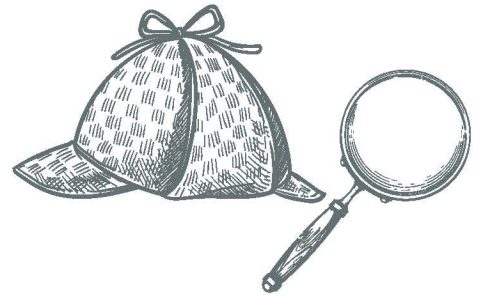
MATES Charter School

| After School Classes |

Winter 2022

**REGISTER TODAY:**

[www.growingoutdoors.com](http://www.growingoutdoors.com)



## PROFESSOR EGGHEAD DETECTIVES

**DAY: FRIDAYS**

**TIME: 1:30 - 2:30 PM**

**COST: VISIT [WWW.GROWINGOUTDOORS.COM](http://WWW.GROWINGOUTDOORS.COM) FOR PRICING**

**GRADES: K**

**DATES: VISIT [WWW.GROWINGOUTDOORS.COM](http://WWW.GROWINGOUTDOORS.COM) FOR DATES**

### COURSE DESCRIPTION:

Something mysterious is happening at the Academy! Cookies have been snatched, trophies have been taken, a mascot is missing, a notebook has vanished into thin air, and most importantly - Professor Egghead's prized portrait has been **STOLEN!** Come join the Egghead Detective Squad this session as we dust for prints, decode messages, analyze DNA, and use real forensic science techniques to crack the cases. The best part? Eggheads take everything home at the end of each class! All Eggheads will also get their Detective ID card, authorizing them to use real science to solve mysteries. At the end of the session, every Egghead will get their official Egghead Detective Degree, using science of course!

## WHAT IS PROFESSOR EGGHEAD SCIENCE ACADEMY?

All sessions of Professor Egghead are **BRAND NEW** and different from the previous session, with all new builds, experiments, take homes, and lessons. Continue the fun each session with a new module! Professor Egghead Science Academy offers the coolest science and engineering programs for girls and boys. **Space is limited and is filled on a first come, first served basis.** Science has never been this cool!™

### Professor Egghead Science Academy:

Is a world-renowned children's science academy located in Los Angeles. The institute was named after its founder, Professor Egghead, in 2007. To date, PESA is the only place where children go to earn an Egghead Science Degree. For more information, please visit: [ProfessorEgghead.com/LosAngeles](http://ProfessorEgghead.com/LosAngeles)

### HAVE A QUESTION?

**(818) 856-3996 OR [LOSANGELES@PROFESSOREGGHEAD.COM](mailto:LOSANGELES@PROFESSOREGGHEAD.COM)**

**[PROFESSOREGGHEAD.COM/LOSANGELES](http://PROFESSOREGGHEAD.COM/LOSANGELES) AND FOLLOW US ON INSTAGRAM: @PROFEGGHEAD**

